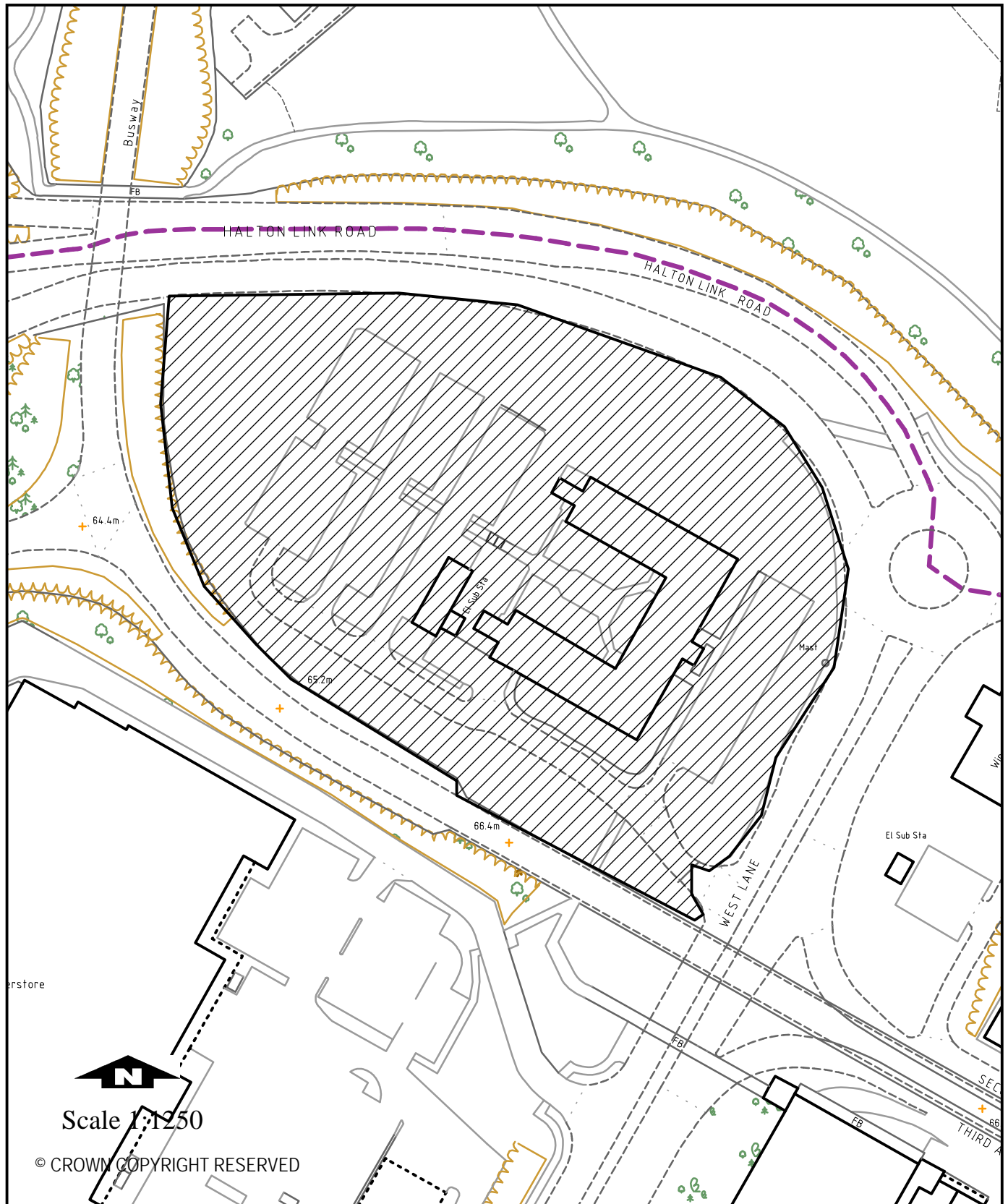


PLAN 1a

PLAN NUMBER 10/00254/FUL

DEVELOPMENT CONTROL COMMITTEE

6th December 2010



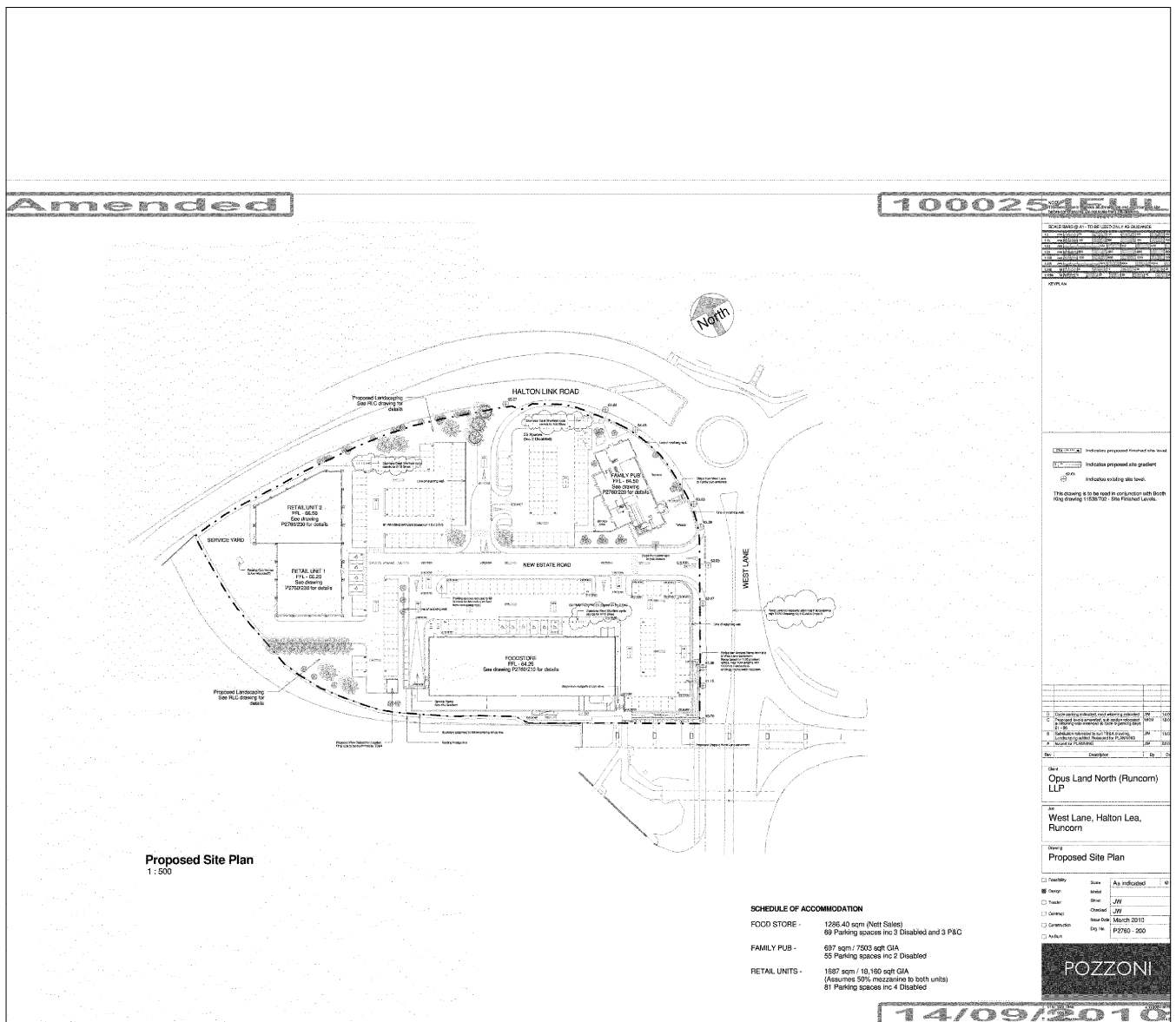
PLAN 1b

PLAN NUMBER 10/00254/FUL

LAYOUT PLAN

**DEVELOPMENT CONTROL
COMMITTEE**

6th December 2010



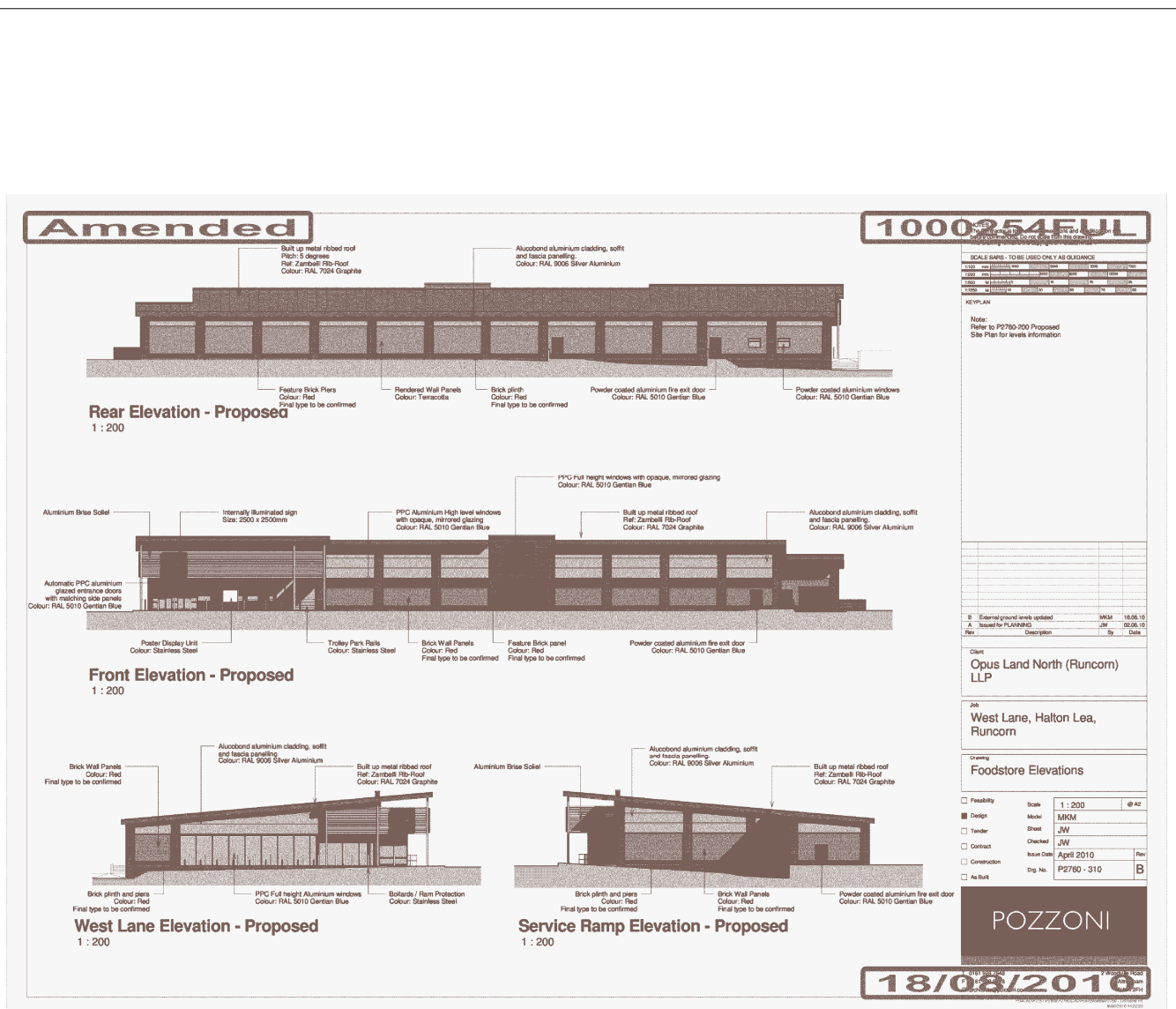
PLAN 1c

PLAN NUMBER 10/00254/FUL

PROPOSED ELEVATIONS

**DEVELOPMENT CONTROL
COMMITTEE**

6th December 2010



PLAN 1d

PLAN NUMBER 10/00254/FUL

PROPOSED ELEVATIONS

**DEVELOPMENT CONTROL
COMMITTEE**

6th December 2010

amended

1000254FUL



Elevation to West Lane

Elevation to New Estate Road

Elevation to Halton Link Road

Elevation to Car Park

POZZON

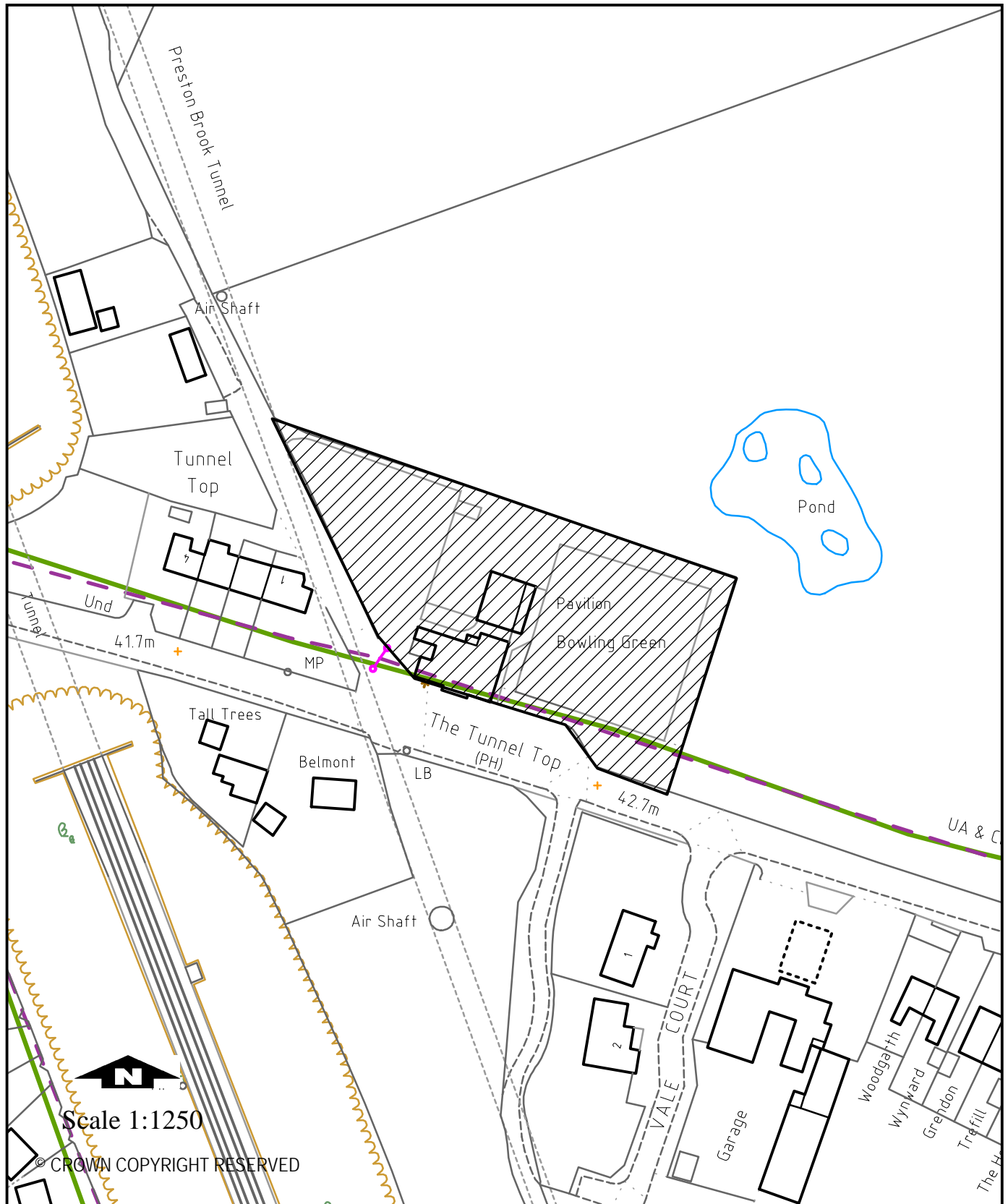
18/08/2010

PLAN 2a

PLAN NUMBER 10/00366/COU

DEVELOPMENT CONTROL COMMITTEE

6th December 2010



PLAN 2b

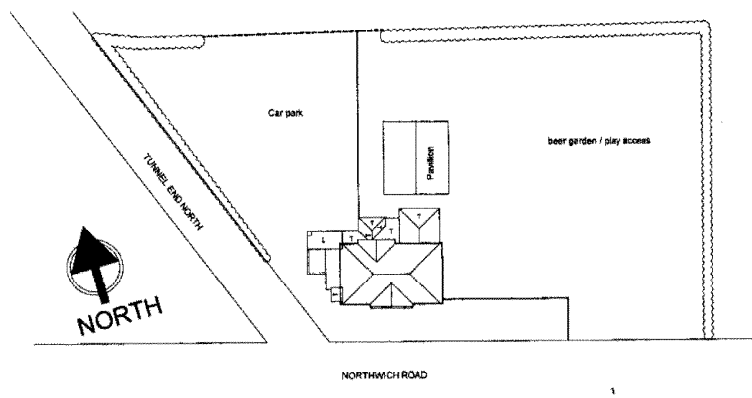
PLAN NUMBER 10/00366/COU

LAYOUT PLAN

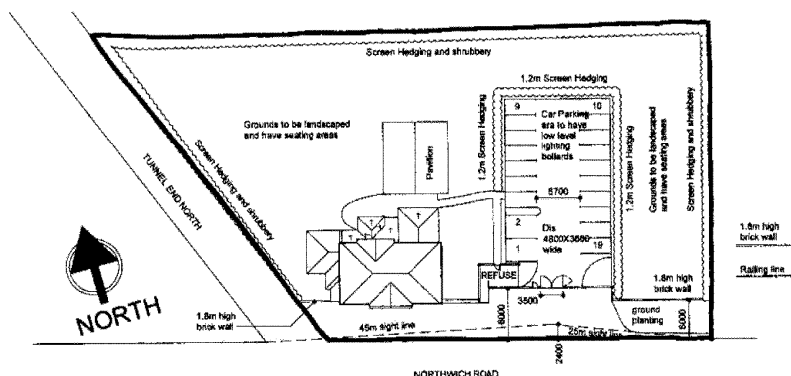
**DEVELOPMENT CONTROL
COMMITTEE**

6th December 2010

10/00366/COU



EXISTING SITE PLAN



PROPOSED SITE PLAN

J:\Dyes (rev1) Design\2008\10\00 Tunnel Top Public House layout.dwg (1) Site plan, 25/09/2010 15:58:08

RECEIVED
19 JUL 2010
RECEIVED

RECEIVED
12 APR 2010
RECEIVED

| Project | Access | Date |
|---------|--------|------|
| | | |

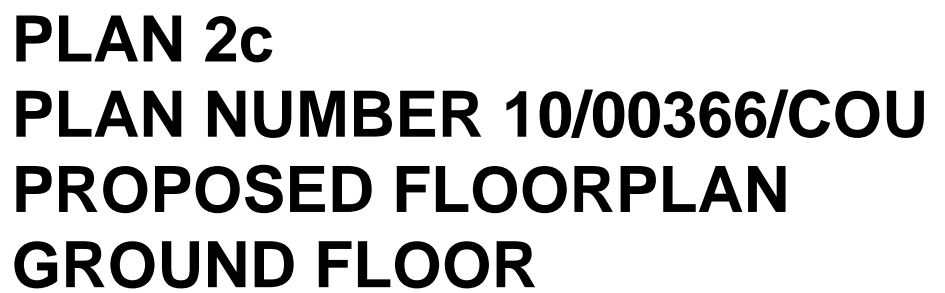
J.A. DESIGNS
ARCHITECTURAL CONSULTANTS LTD

JOB TITLE
Tunnel Top Public House
Finerose Properties Ltd
Northwich Rd
Runcorn

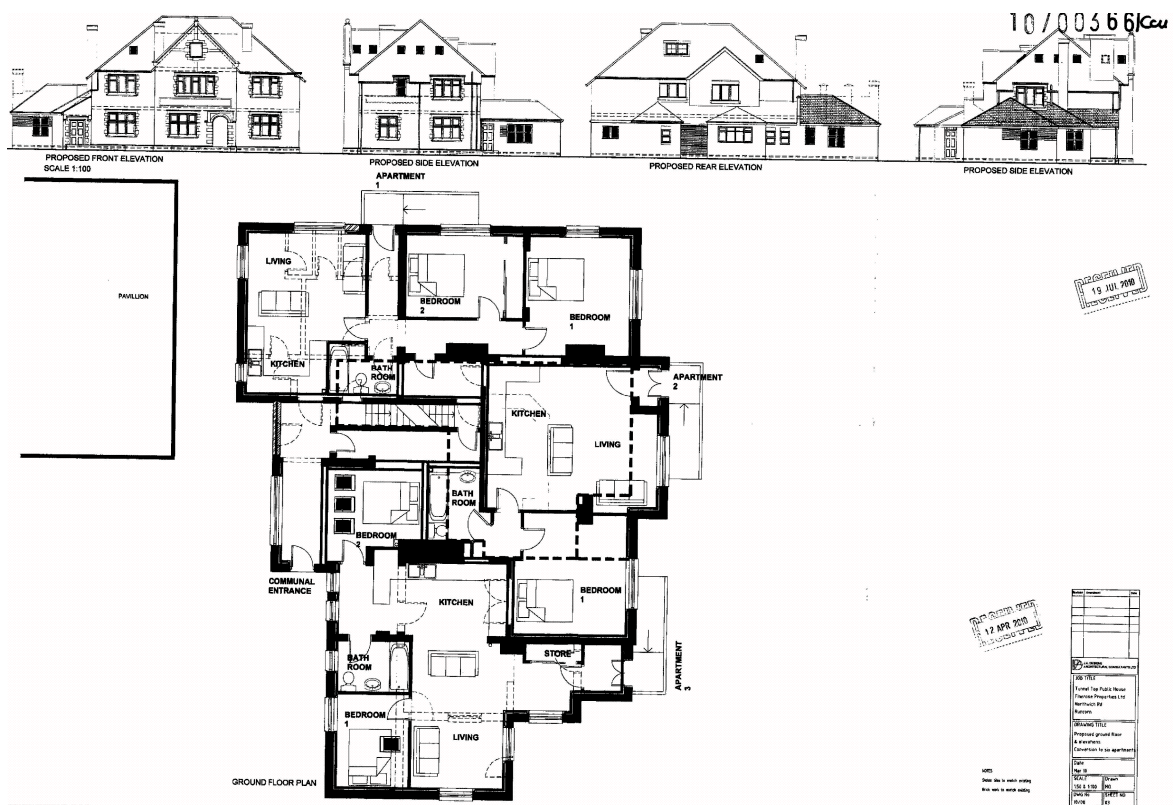
DRAWING TITLE
Existing site plan
and
Proposed site plan

| | |
|----------|----------|
| Date | Mar 10 |
| SCALE | 1:500 |
| DWG No | 10/00366 |
| SHEET NO | 05 |

DRAWING NOT TO BE SCALED AND ALL DIMENSIONS GIVEN ON SITE



6th December 2010



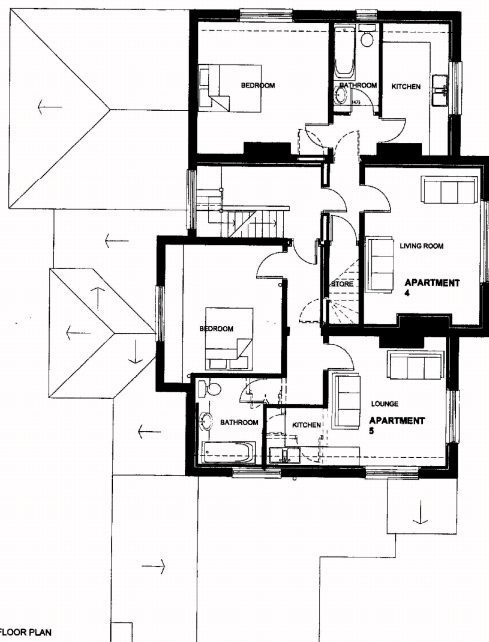
PLAN 2d
PLAN NUMBER 10/00366/COU
PROPOSED FLOORPLAN
1ST FLOOR

**DEVELOPMENT CONTROL
COMMITTEE**

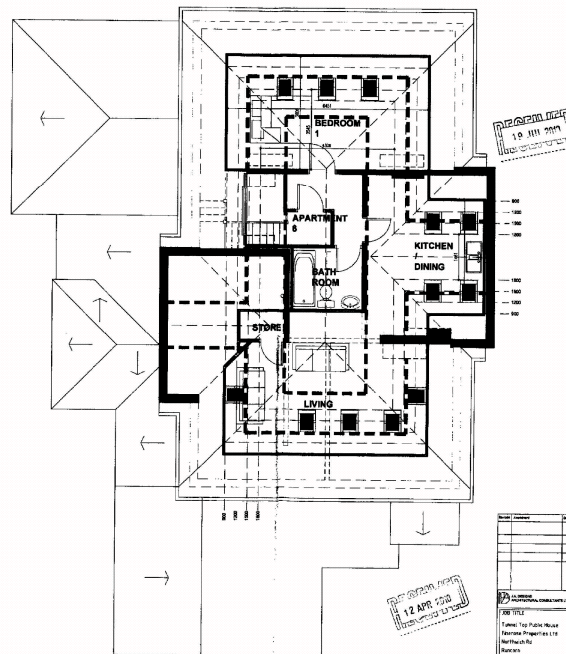
6th December 2010

10/00366/Cou

FIRST FLOOR PLAN



ROOF PLAN



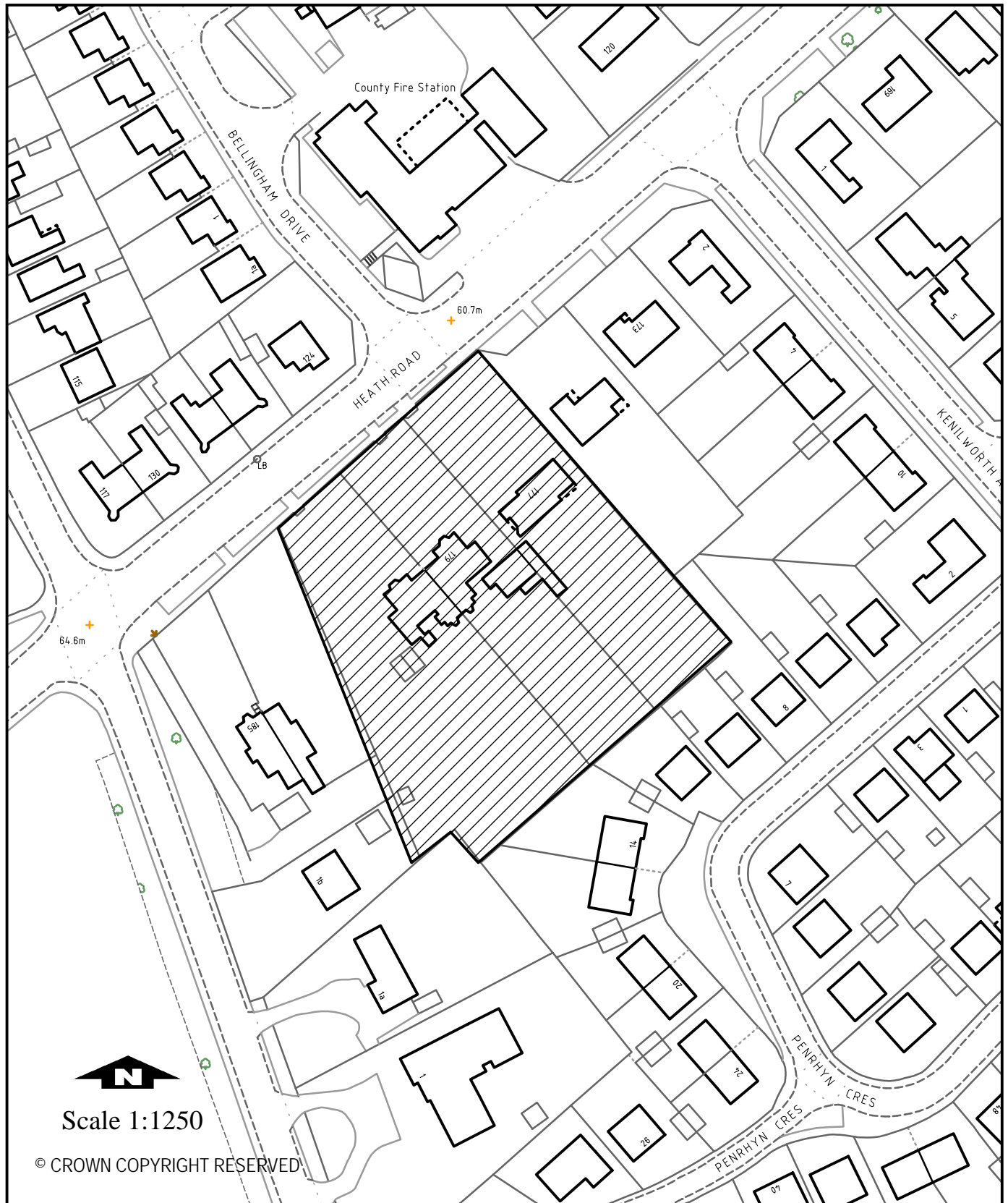
| Drawn | Checked | Date |
|--|---------|--------------|
| | | |
| <p>FOR TITLE Name: Top Public House Address: 10/00366/COU Date: 10/00366/COU</p> | | |
| <p>FOR WORK FILE Proposed 1st floor 10/00366/COU Conversion to 10 apartments</p> | | |
| Scale | 1:100 | 10/00366/COU |
| Scale | 1:100 | 10/00366/COU |
| Scale | 1:100 | 10/00366/COU |

PLAN 3a

PLAN NUMBER 10/00369/FUL

DEVELOPMENT CONTROL COMMITTEE

6th December 2010



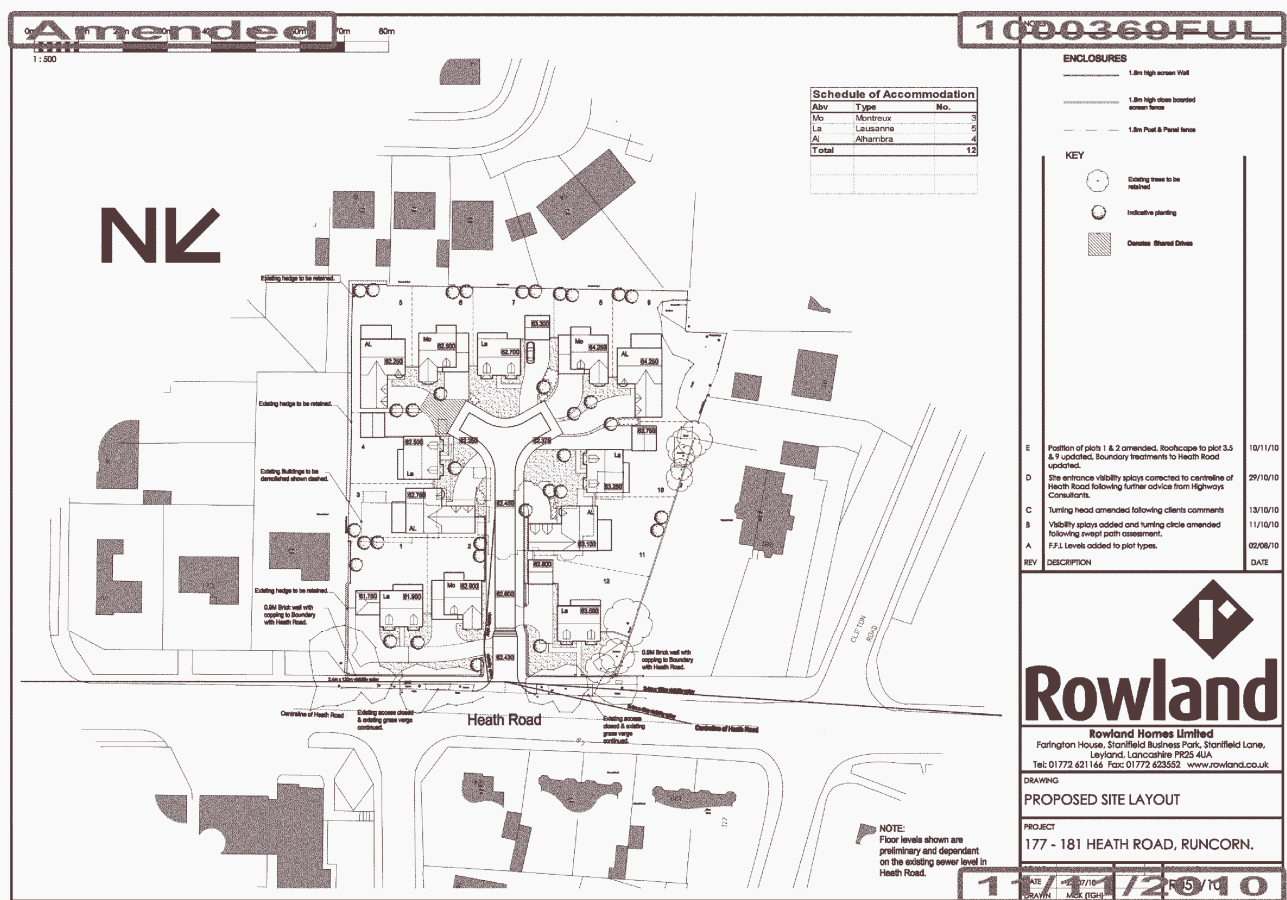
PLAN 3b

PLAN NUMBER 10/00369/FUL

LAYOUT PLAN

**DEVELOPMENT CONTROL
COMMITTEE**

6th December 2010



PLAN 3c

PLAN NUMBER 10/00369/FUL

PROPOSED ELEVATIONS

**DEVELOPMENT CONTROL
COMMITTEE**

6th December 2010

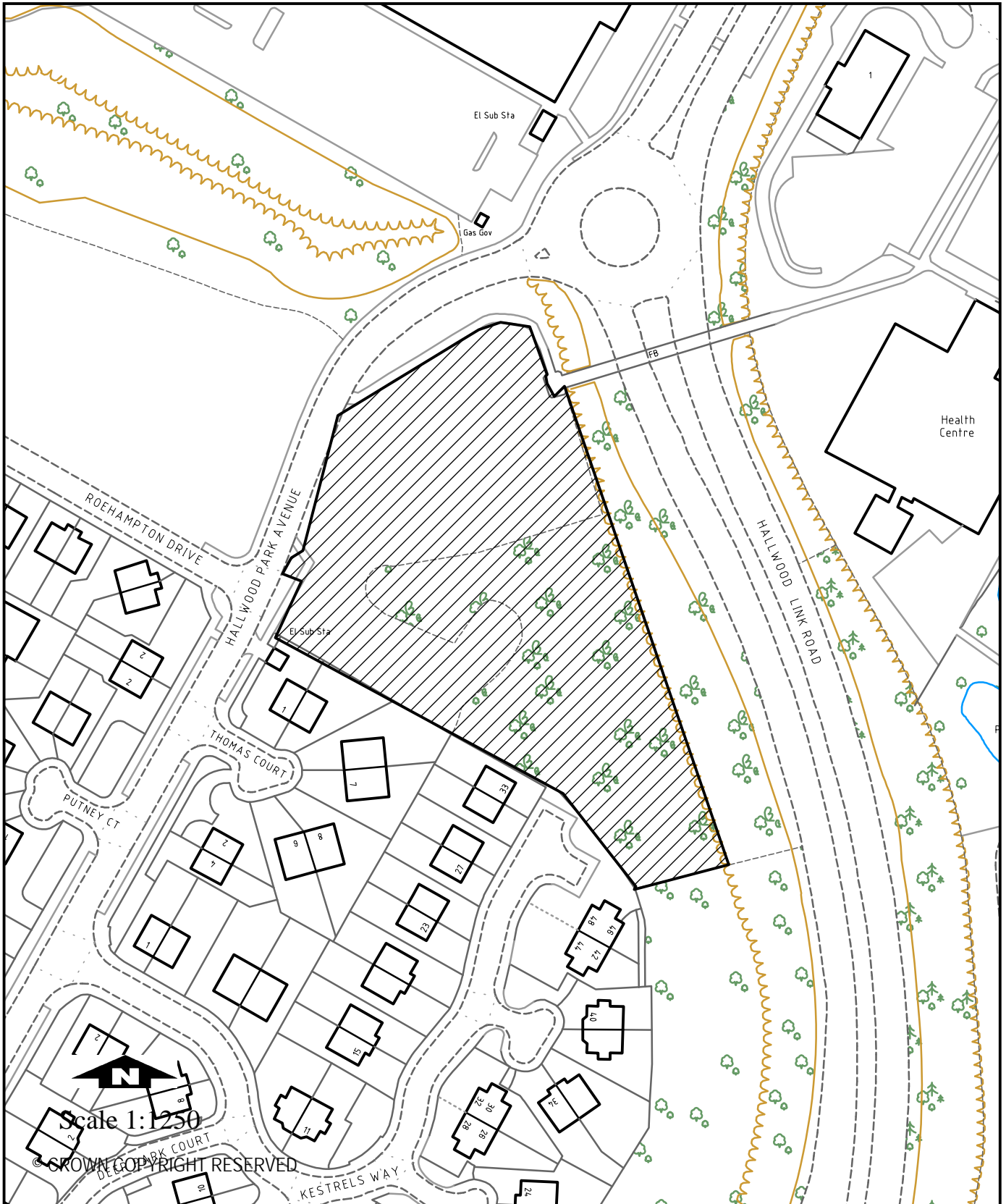


PLAN 4a

PLAN NUMBER 10/00400/FUL

DEVELOPMENT CONTROL COMMITTEE

6th December 2010



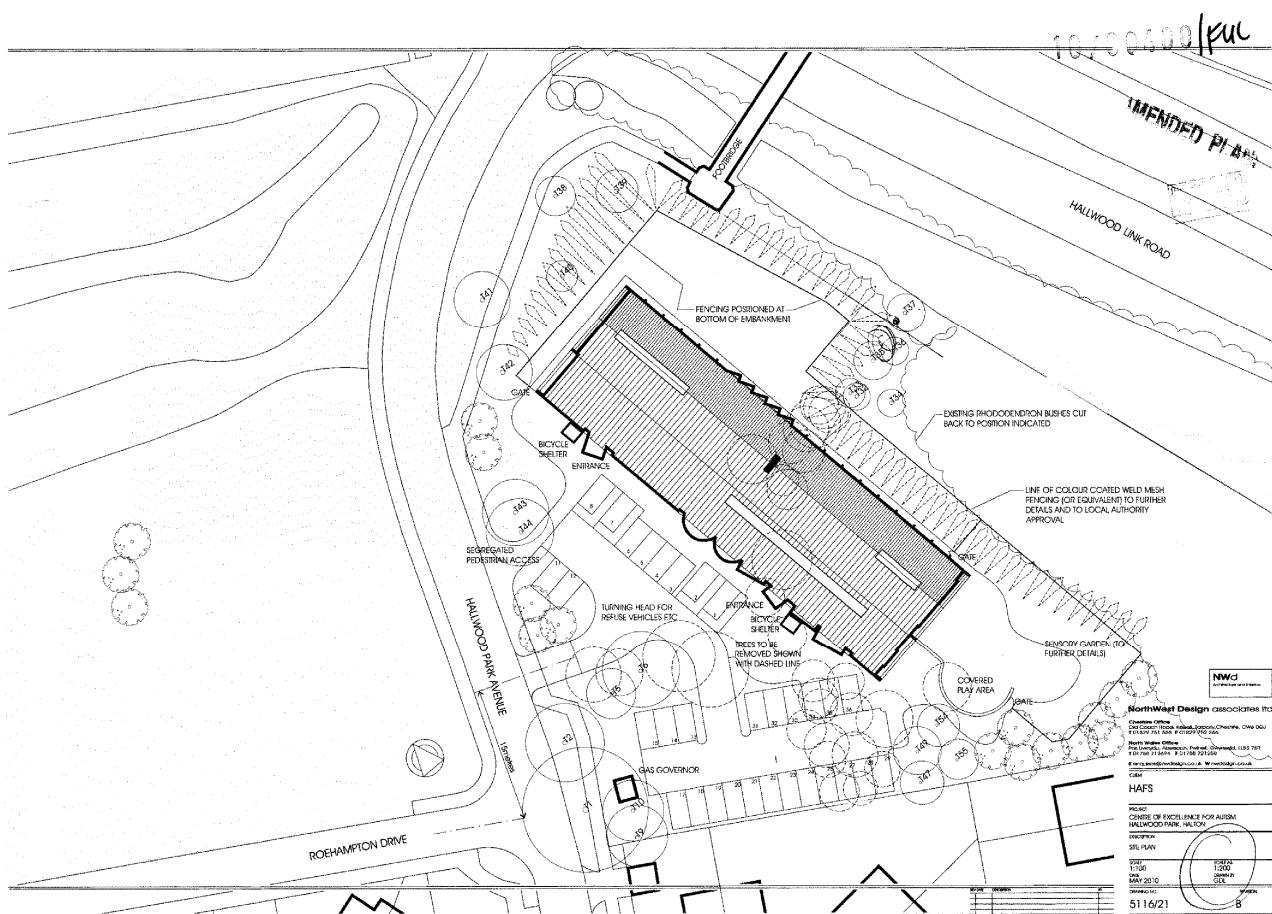
PLAN 4b

PLAN NUMBER 10/00400/FUL

LAYOUT PLAN

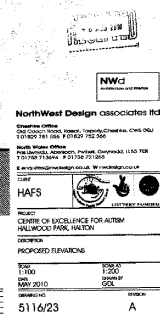
**DEVELOPMENT CONTROL
COMMITTEE**

6th December 2010





6th December 2010



PLAN 5a

PLAN NUMBER 10/00407/FUL

DEVELOPMENT CONTROL COMMITTEE

6th December 2010



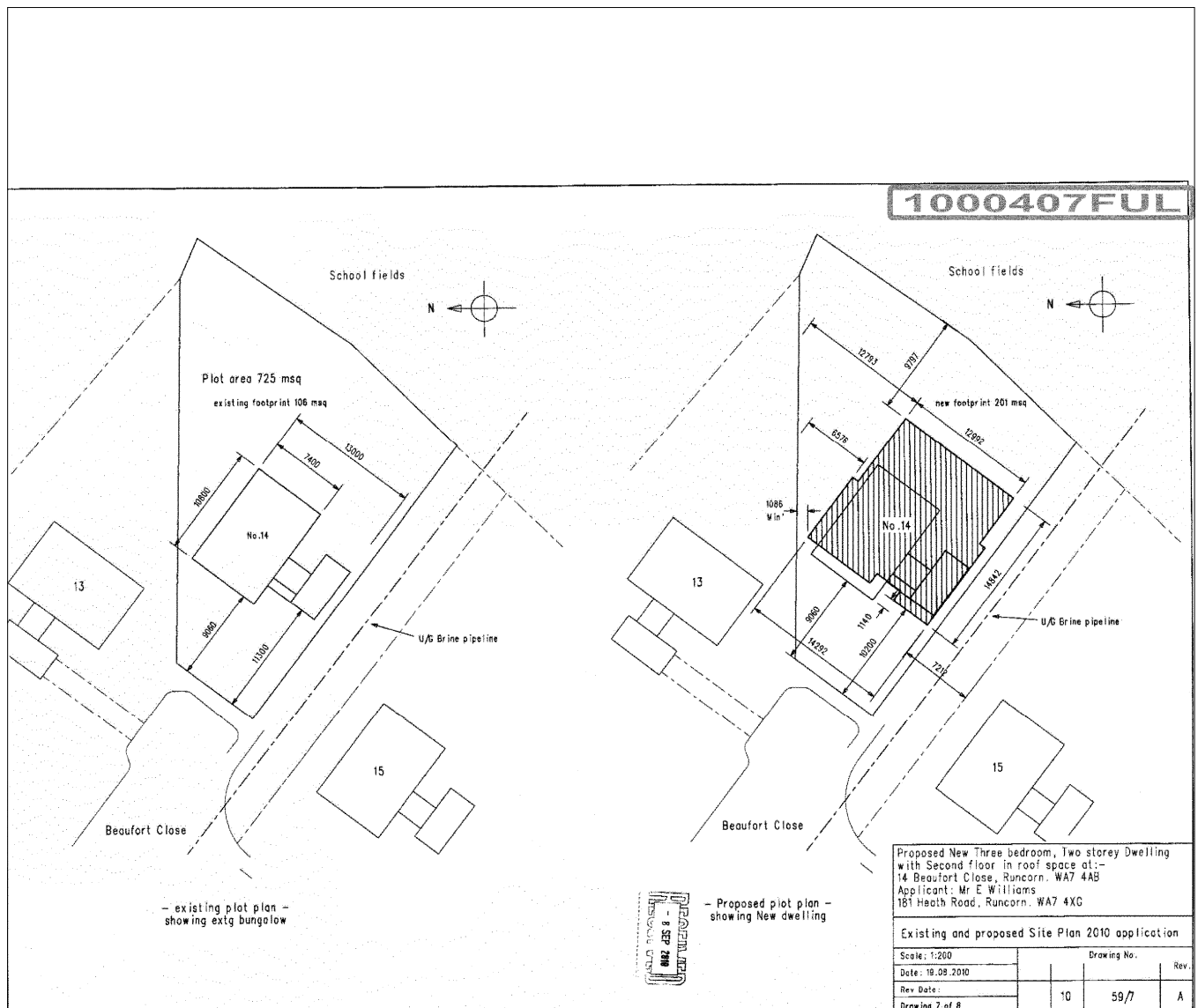
PLAN 5b

PLAN NUMBER 10/00407/FUL

LAYOUT PLAN

**DEVELOPMENT CONTROL
COMMITTEE**

6th December 2010



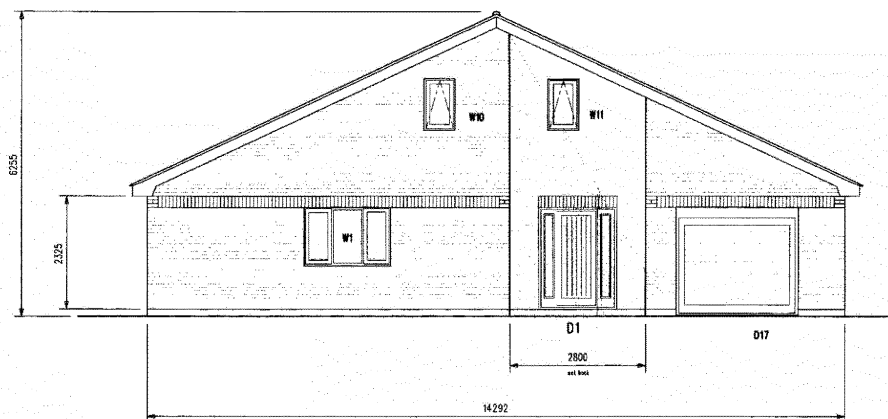
PLAN 5c

PLAN NUMBER 10/00407/FUL

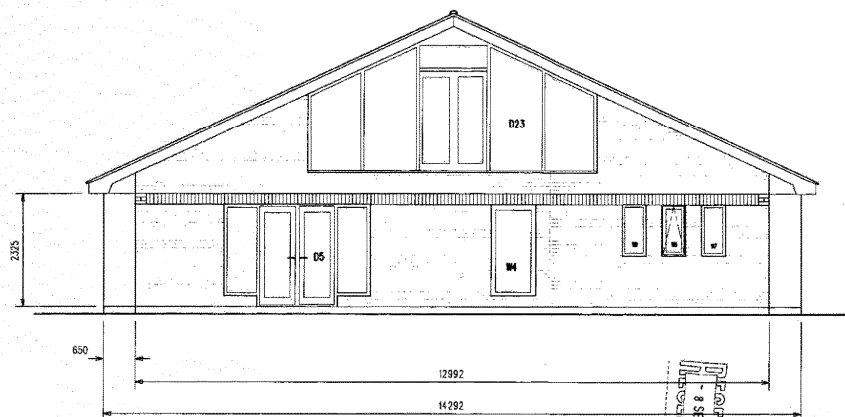
PROPOSED ELEVATIONS

**DEVELOPMENT CONTROL
COMMITTEE**

6th December 2010



- PROPOSED FRONT (N/W) ELEVATION -



- PROPOSED REAR (S/E) ELEVATION -

HALTON DESIGN 0151 424 780

Proposed New Three bedroom, Two storey Dwelling
with Second floor in roof space at:-
14 Beaufort Close, Runcorn. WA7 4AB
Applicant: Mr E Williams
181 Heath Road, Runcorn. WA7 4XG

PROPOSED FRONT and REAR ELEVATIONS

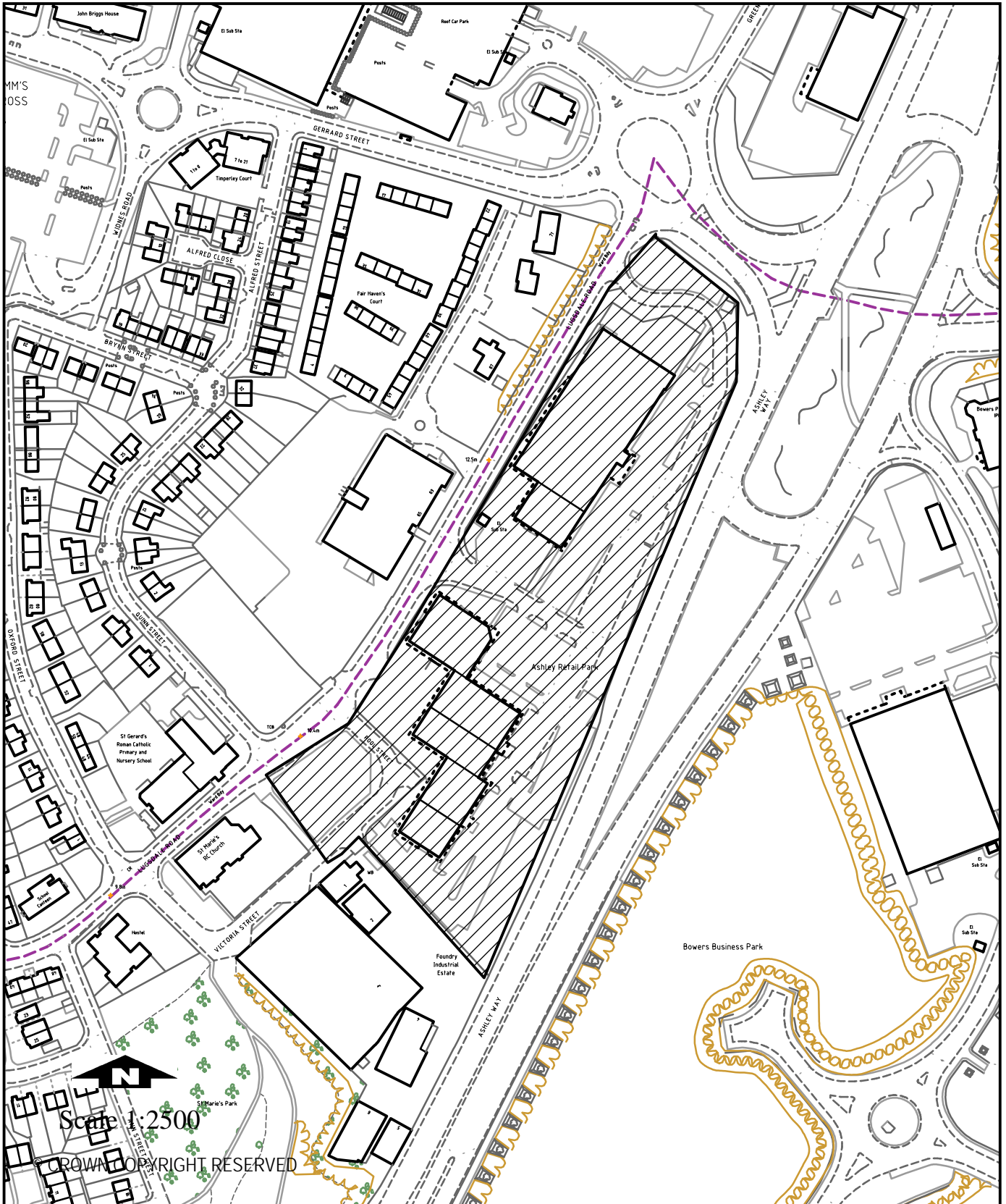
| | | | | |
|------------------|-------------|----|------|-----|
| Scale: 1:50 | Drawing No. | | | Rev |
| Date: 19.07.2010 | | | | |
| Rev Date: | A2 | 10 | 59/1 | |
| Drawing of 8 | | | | |

PLAN 6a

PLAN NUMBER 10/00419/OUT

DEVELOPMENT CONTROL COMMITTEE

6th December 2010



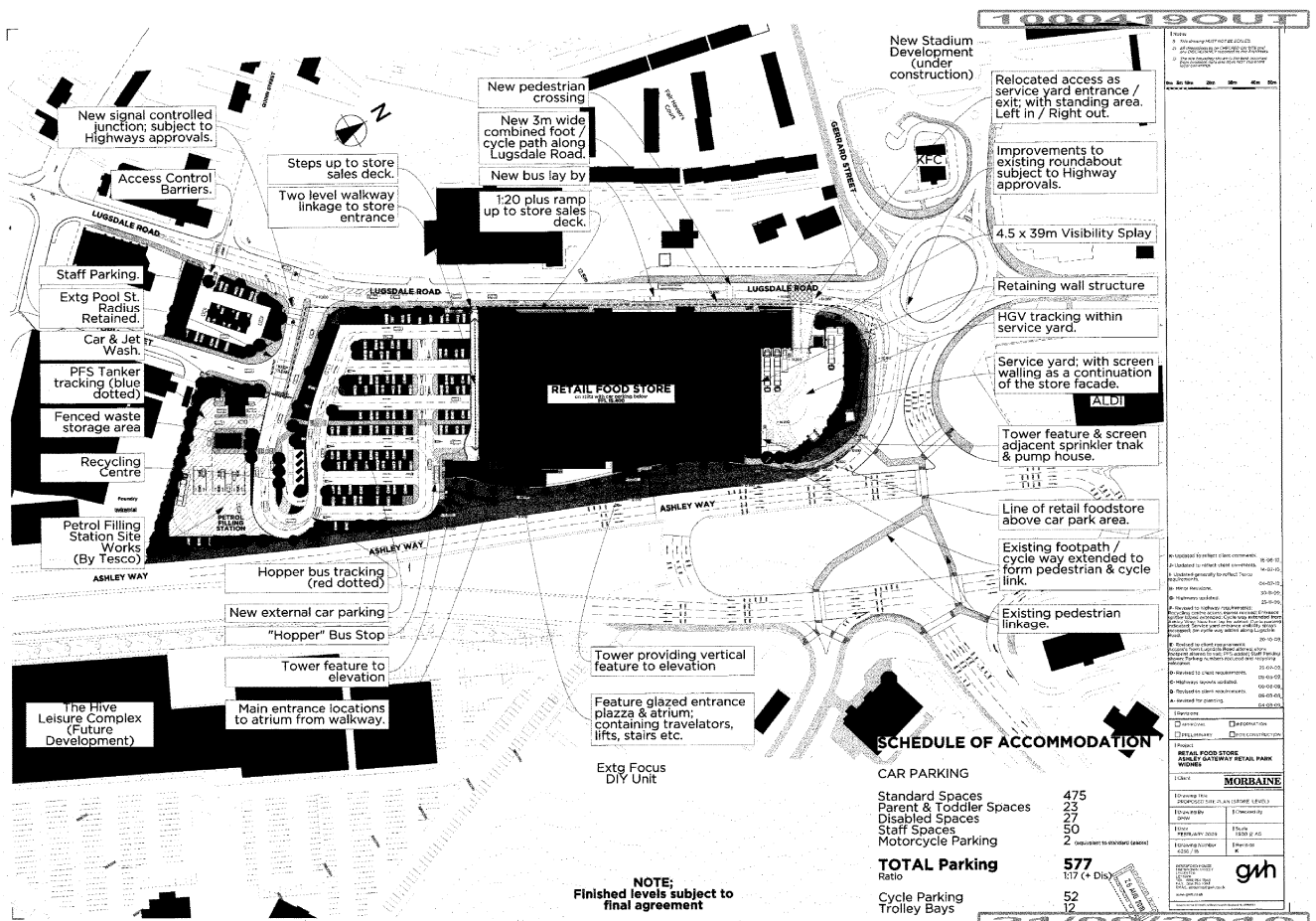
PLAN 6b

PLAN NUMBER 10/00419/OUT

LAYOUT PLAN

**DEVELOPMENT CONTROL
COMMITTEE**

6th December 2010



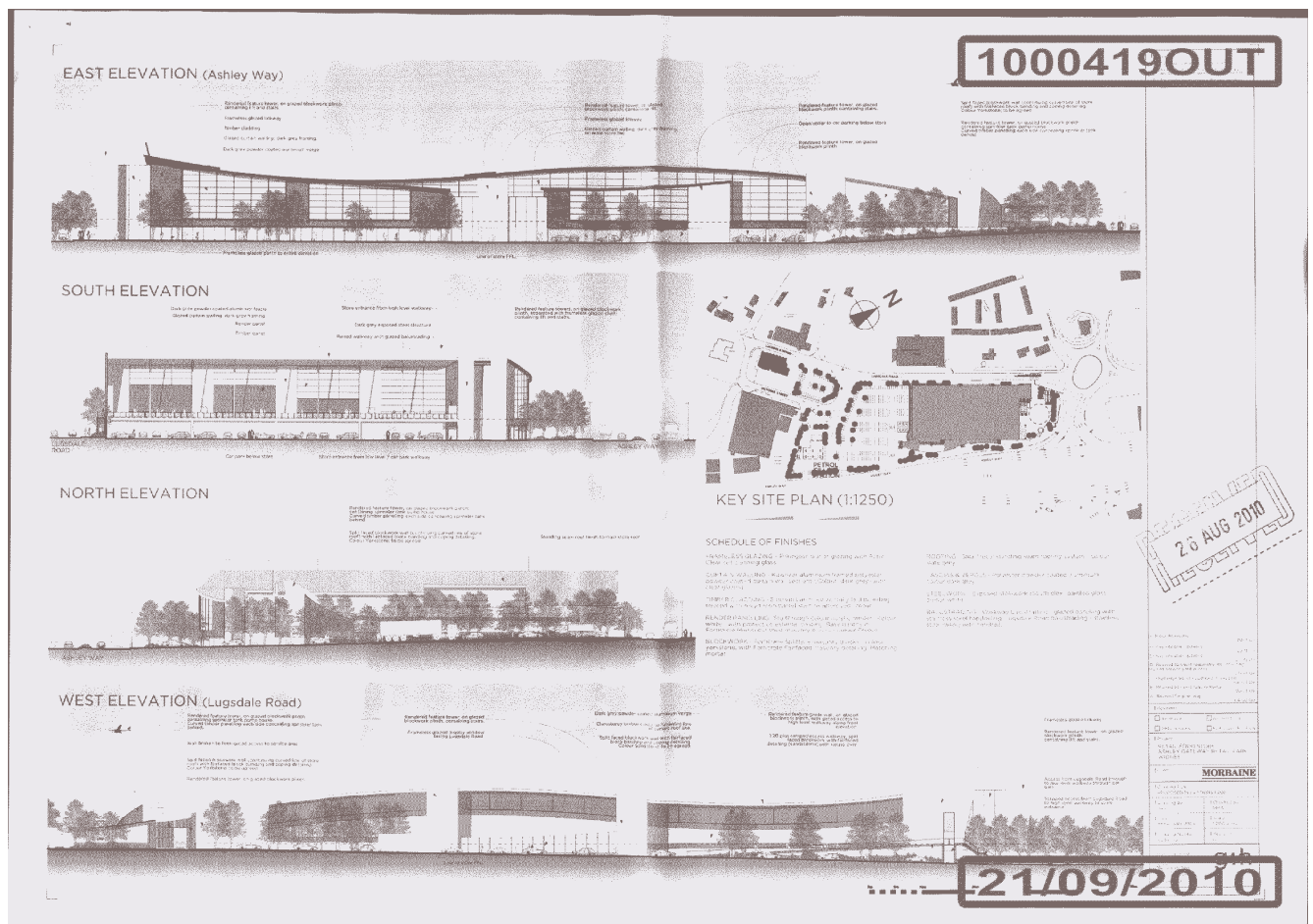
PLAN 6c

PLAN NUMBER 10/00419/OUT

PROPOSED ELEVATIONS

**DEVELOPMENT CONTROL
COMMITTEE**

6th December 2010

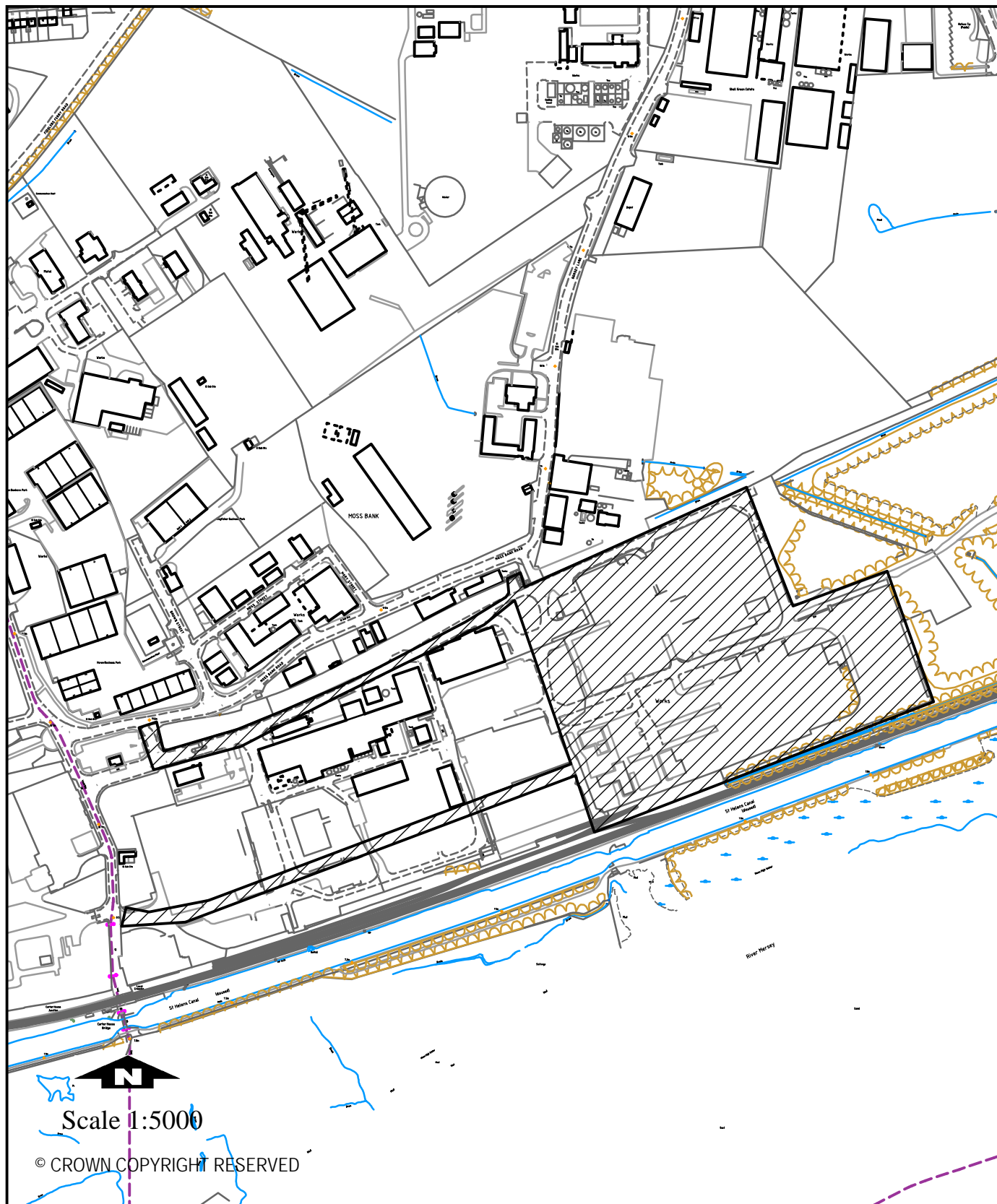


PLAN 7a

PLAN NUMBER 10/00446/EIA

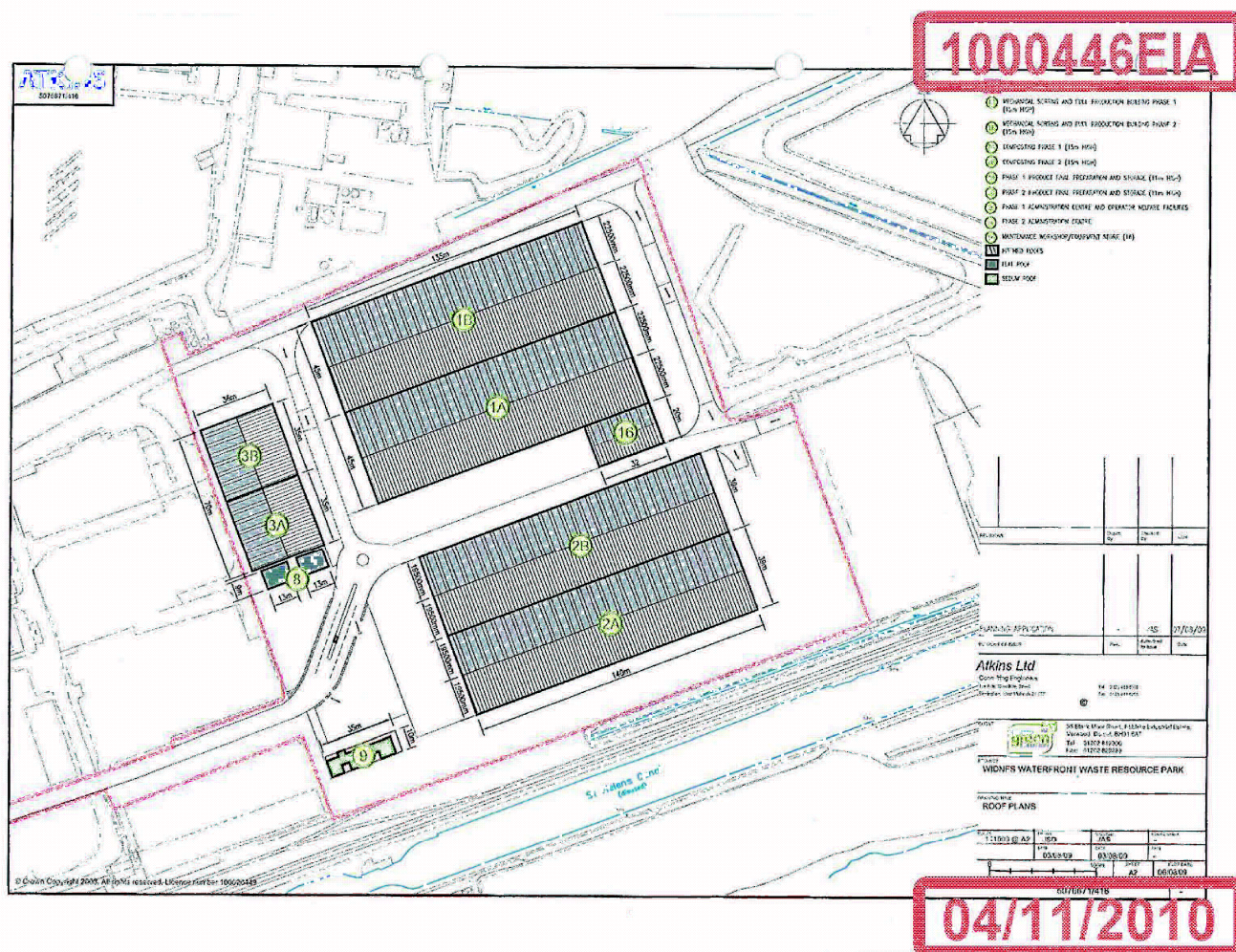
DEVELOPMENT CONTROL COMMITTEE

6th December 2010





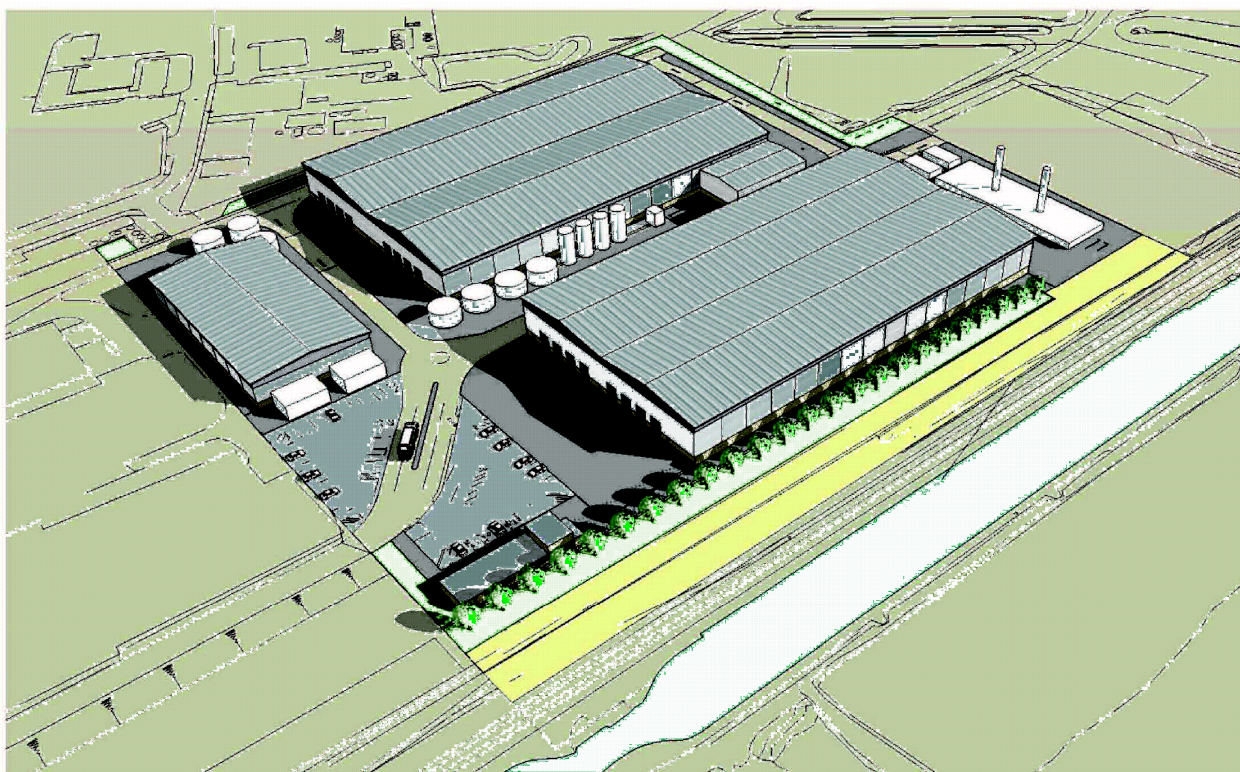
6th December 2010



PLAN 7c
PLAN NUMBER 10/00446/EIA
PROPOSED ELEVATIONS

**DEVELOPMENT CONTROL
COMMITTEE**

6th December 2010



South West Aerial View

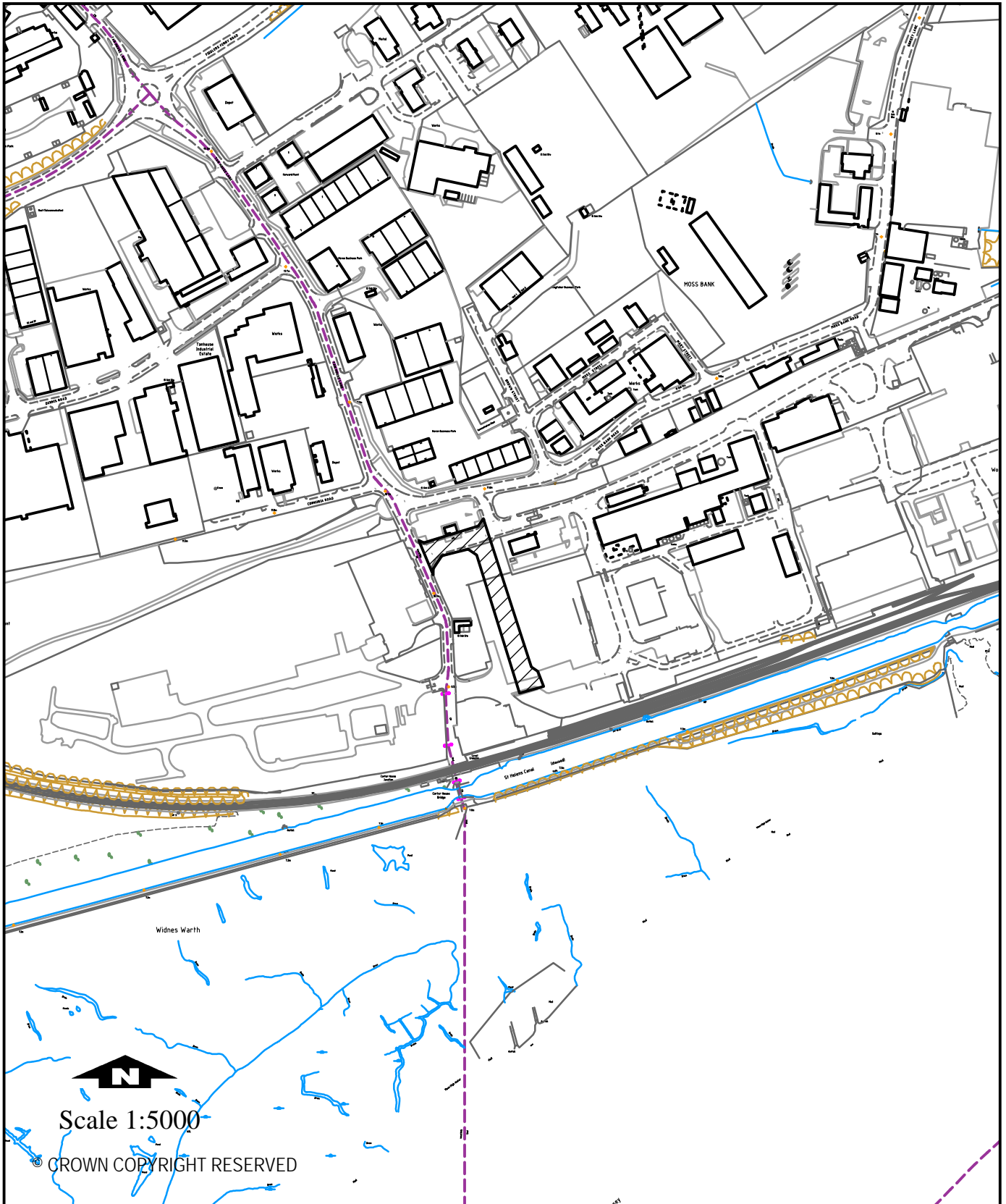
ATKINS

PLAN 8a

PLAN NUMBER 10/00305/FUL

DEVELOPMENT CONTROL COMMITTEE

6th December 2010



PLAN 8b
PLAN NUMBER 10/00305/FUL
LAYOUT PLAN

**DEVELOPMENT CONTROL
COMMITTEE**

6th December 2010

